

B&W multifunction printers

**IM 370F**

**IM 460F**

**IM 460FTL**

Printer  Copier  Scanner  Fax

**RICOH**  
imagine. change.



# Versatile devices for dynamic office environments

Today, many organizations are seeking new ways to optimize office space and resources to accommodate changing work styles. Additionally, there is a rising need for a reliable IT and print infrastructure as organizations seek to seamlessly facilitate digital workflows and address security challenges.

This change has created an opportunity for cost-effective and robust workplace technology that streamlines operations, offers the flexibility to easily transition between paper and digital workflows, and provides enhanced data security.

Ricoh's latest generation of black-and-white multifunction devices optimizes day-to-day operations by enhancing productivity, increasing data security, and creating a seamless user experience in a compact all-in-one device.

Experience the versatility of the new IM 370F/IM 460F/IM 460FTL series — a perfect addition to today's modern workplace that empowers your teams to easily capture, print, share information, and digitize workflows.



Work more efficiently with fast black-and-white print and color scan speeds



Optimize office space with a compact multifunction device



Protect your business data and intellectual property



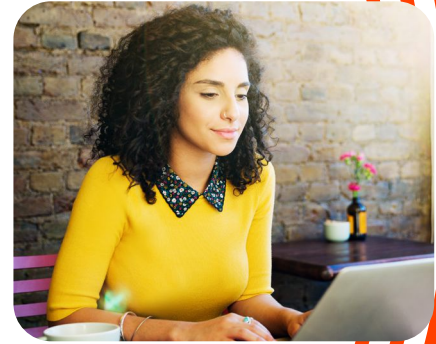
Customize options to match your workflow needs with RICOH Smart Integration technology



# A comprehensive solution for diverse workflow needs

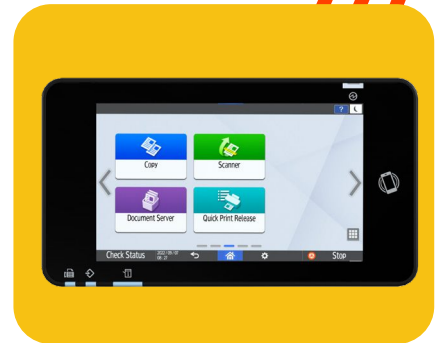
## Enhanced quality, performance, and productivity

Experience the benefits of fast black-and-white print and color scan speeds with our compact letter/legal multifunction device. Enjoy the added convenience of A3 capabilities, allowing you to easily print, copy, and scan 11" x 17" pages when needed. What's more, you can personalize and enhance the capabilities of your device with applications and software solutions readily available from the cloud with RICOH Smart Integration.



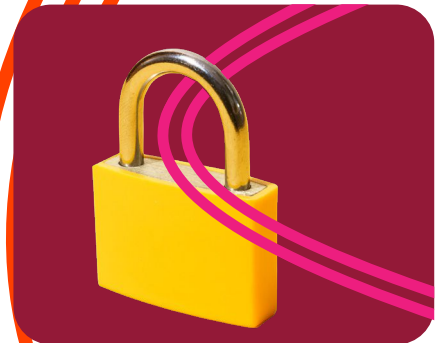
## Improved usability and reliability

Ideal for smaller office workspaces or desktop environments, these devices offer space-saving efficiency and low noise levels. Ricoh's familiar, user-friendly Smart Operation Panel has been enhanced to provide a more intuitive and seamless user experience with an upgraded OS for better security and usability, as well as improved touch response and faster performance.



## Reliable protection of your data

Equipped with the latest controller features, these smart devices provide enhanced privileged account control that gives you more freedom when creating administrator roles and minimizes risks related to sharing IDs. You can also assign different privileges to each role and link it to your user ID system, including Windows and LDAP platforms. Additionally, Ricoh's Always Current Technology ensures automatic security and software updates downloaded and installed directly to your device as they become available.



## Enhanced sustainability features

As a leader in environmentally-friendly performance, we not only uphold our own commitments but also strive to help support your goals. Our devices utilize up to 17% post-consumer recycled materials for their outer mainframe, while toner bottles are made from 81% recycled plastics. There is zero plastic usage for the toner packaging and the device's optional paper feed unit. The Smart Operation Panel includes new energy-saving features to reduce the operation panel's power consumption by 45% in Sleep Mode.



## Specialized printing capabilities (IM 460FTL only)

Designed with the unique needs of healthcare professionals in mind, the IM 460FTL incorporates specialized firmware and Teflon-coated tray components to reliably print specialized media such as wristbands and labels. It also features a built-in locking tray and optional additional locking trays to safeguard sensitive media such as prescription blanks and more. Non-locking trays are also available for standard media printing.



# IM 370F/IM 460F/IM 460FTL

## MAIN SPECIFICATIONS

	IM 370F	IM 460F	IM 460FTL
<b>GENERAL</b>			
Warm-up time		Less than 32 seconds	
First copy speed: B/W		Less than 5 seconds	
First print speed: B/W	3.8 seconds	3.3 seconds	3.3 seconds
Continuous output speed	37 ppm	46 ppm	46 ppm
Memory: standard		6GB (Mainframe 2GB+SOP 4GB)	
Optional Storage		Opt. 256 GB SSD or Opt. 320 GB HDD	
SPDF capacity		50 sheets	
Weight		41 kg / 90.4 lbs.	
Dimensions: W x D x H		14.7"×19.4"×25.2"	
Power source		120-127V 60Hz	
<b>COPIER</b>			
Multiple copying		Up to 999 copies	
Resolution		600 x 600 dpi	
Zoom		From 25%-400% in 1% increments	
<b>PRINTER</b>			
CPU		Marvell 88PA6270 1.2GHz	
Printer language: standard		PCL 5e, PCL6, PostScript®3™ Emulation, PDF Direct Print Emulation	
Printer language: option		Genuine Adobe® PostScript®3™, Adobe® PDF Direct Print, XPS, IPDS	
Print resolution: maximum		Up to 1200 x 1200 dpi	
Network interface: standard		Ethernet 10 base-T/100 base-TX/1000 base-T, USB Host I/F Type A, USB Device I/F Type B	
Mobile printing capability		Apple AirPrint™, Mopria, Ricoh Smart Device Connector	
Windows® environments		Windows 8.1/10/11; Windows Server 2016/2019/2022	
Mac OS environments		v10.15 or later	
UNIX environments		UNIX Sun Solaris, HP-UX, SCO OpenServer, RedHat Linux Enterprise, IBM AIX	
SAP® environments		SAP R/3, SAP S/4	
<b>SCANNER</b>			
Scanning speed: SPDF		46 ipm (simplex)/92 ipm (duplex)	
Resolution: maximum		Up to 1200dpi	
Compression method File Formats		Single Page: TIFF, JPEG, PDF, PDF/A, High Compression PDF, encrypted PDF, Searchable PDF (OCR Option required) Multi Page: TIFF, PDF (Default), PDF/A, High Compression PDF, encrypted PDF, Searchable PDF (OCR Option required)	
Scan destination types		E-mail, Folder, USB, URL, FTP	
<b>FAX (Optional)</b>			
Circuit		PSTN, PBX	
Transmission speed		3 seconds	
Modem speed: maximum		33.6 Kbps	
Resolution: standard		8x3.85 line/mm, 200x100 dpi	
Maximum Resolution: option		16x15.4 line/mm, 400x400 dpi	
Compression method		MH, MR, MMR	
Scanning speed		46 spm	
Memory: standard		4 MB, (320 pages)	
Memory: maximum		60 MB, (4,800 pages)	
<b>PAPER HANDLING</b>			
Recommended paper size		Paper Tray: 4" x 6" - 8.5" x 11" (A4 - A6) Bypass: Up to 11.69" x 35", Envelopes	
Paper input: standard		500-sheet tray, plus 100-sheet bypass	
Paper input: maximum		2,100 sheets	
Paper output		250 sheets 8.5" x 11"(A4) or smaller; 100 sheets (larger than A4)	
Paper weight		Standard Trays: 16 - 40 lb. / 90 lb. Index (60 - 162 g/m2) Bypass Tray: 14 - 80 lb. /166 lb. Index (52 - 216 g/m2)	
Paper types		Plain, Recycled, Special, Colored, Letterhead, Cardstock, Pre-printed, Coated, Envelope, Label, Gloss	

# IM 370F/IM 460F/IM 460FTL

## MAIN SPECIFICATIONS

	IM 370F	IM 460F	IM 460FTL
<b>ENVIRONMENTAL FEATURES</b>			
Power consumption: maximum		Less than 1600W	
Power consumption operation: B&W	527.6W	624.5W	624.5W
Power consumption: ready / sleep		42.1W / 0.41W	
TEC*	0.38kWh	0.46kWh	0.46kWh
Environmental Certifications		ENERGY STAR® Certified; EPEAT® Gold Rated**	

\* TEC value is measured based on the ENERGY STAR Ver. 3.0 test method.

\*\* EPEAT Gold rating is applicable only in the USA.

### CONSUMABLES

Toner (black)	Standard-yield toner: 13,500 pages; High-yield toner (IM 460F/460FTL only): 22,000 pages		
Waste Toner Bottle	Yield: 50,000 pages		
Declared toner yield in accordance with ISO/IEC 19752; Waste toner bottle yield based on 3 pages/job and 6% coverage on 8.5"x11" paper.			

### PAPER SUPPLY OPTIONS

Paper Feed Unit PB1200 (500 Sheet), Paper Feed Unit PB1200TL (500 Sheet Lock & Label), Medium Cabinet Type A7, High Cabinet Type A8, Caster Table Type A6

### OTHER OPTIONS

Document Feeder Paper Guide Tray, HDD Option Type M54 320GB, SSD Option Type M54 256GB, IEEE 802.11a/b/g/n Interface Unit Type M54, PostScript3 Unit Type M54, OCR Unit Type M54, Fax Memory Unit Type M54 64MB, IPDS Unit Type M54, Optional Counter Interface Unit Type M12, Optional Card Reader Cover Type M54

This device does not support PoE (Power over Ethernet) and should not be connected to a PoE hub. Connecting to a PoE hub could cause damage and void warranty coverage.

Some options may not be available at the time of market release.

Specifications are subject to change without notice.

For maximum performance and yield, we recommend using genuine Ricoh parts and supplies.

Some features may require additional options and/or charges.



**RICOH**  
imagine. change.

[www.ricoh-usa.com](http://www.ricoh-usa.com)

Ricoh USA, Inc., 300 Eagleview Blvd, Exton, PA 19341, 1-800-63-RICOH.

©2023 Ricoh USA, Inc. All rights reserved. Ricoh® and the Ricoh logo are registered trademarks of Ricoh Company, Ltd. All other trademarks are the property of their respective owners. The content of this document, and the appearance, features and specifications of Ricoh products and services are subject to change from time to time without notice. Products are shown with optional features. While care has been taken to ensure the accuracy of this information, Ricoh makes no representation or warranties about the accuracy, completeness or adequacy of the information contained herein, and shall not be liable for any errors or omissions in these materials. Actual results will vary depending upon use of the products and services, and the conditions and factors affecting performance. The only warranties for Ricoh products and services are as set forth in the express warranty statements accompanying them.

R4194-2

Tel. +502 2360-1140  
[ventas@artestgraficasca.com](mailto:ventas@artestgraficasca.com)  
[www.artestgraficasca.com](http://www.artestgraficasca.com)